

CEFA-C-PB-LP

CW Erbium Fiber Amplifier C-Band Low Power



B130



B150



M160

MAIN FEATURES

- Up to 23 dBm of saturated output power
- Low noise figure
- Low power consumption
- Single or multi EDFA benchtop or OEM module versions available
- Polarization-maintaining (optional)
- Mid-stage access (optional)
- Wide range operating temperature (-20 °C to +65 °C for modules)

MAIN APPLICATIONS

- TEST AND MEASUREMENT
- LiDAR
- MICROWAVE OPTICS
- NANOTECHNOLOGY
- OPTICAL TRANSMISSION NETWORKS
- FTTH / CATV

“

The CEFA-C-PB-LP series are Erbium Fiber Amplifiers designed for single channel amplification in the C-Band.

These amplifiers can deliver a saturated output power up to 23 dBm. They include a pre-amplifier stage which allows them to be seeded with low input power (down to -20 dBm). They offer a very low noise figure and a high optical signal to noise ratio (OSNR) at the output.

The series includes polarization maintaining models. A mid stage access option is also available for adding a fiber component, like a DCM module.

The CEFA-C-PB-LP are available in single or multi EDFA benchtops or compact OEM modules. The benchtop platforms offer the possibility to control the amplifier via the front panel or remotely via serial USB and Ethernet ports. Both models offer robustness and reliability

”

www.keopsys.com

Many options and configurations are available. Please contact Lumibird to find the best match for your needs and compatibility between options.

CEFA-C-PB-LP

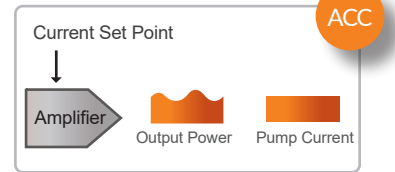
CW Erbium Fiber Amplifier C-Band Low Power



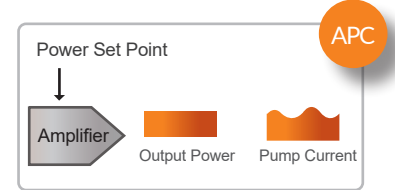
SPECIFICATIONS

	CPB15	CPB18	CPB21	CPB23
Mode of operation	CW			
Wavelength range (nm)	1529-1562			
Saturated output power at -6 dBm input (dBm)	15	18	21	23
Input power range (dBm)	-20 to 0			
Noise figure at -6 dBm and 1550 nm input (dB)	< 5 for SM, < 5.5 for PM			
Polarization	Random (SM) or linear (PM with PER > 20 dB)			
Control mode	ACC, APC			
Output power tunability (%)	10 to 100		30 to 100	
10 dB loss mid-stage access	Non applicable	Option		
Input/output termination	FC/APC, SC/APC, FC/UPC, SC/UPC			

Mode of operation



ACC (Automatic Current Control)



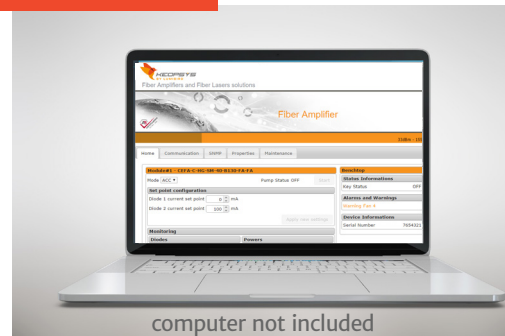
APC (Automatic Power Control)

EASY TO CONTROL !



Benchtop

Control box for modules



computer not included

Control of device

- User-friendly benchtop with dial and front panel display for easy control and monitoring of the product
- Modules with optional control box and cables for easy evaluation

Remote control

- USB port for benchtop
- Command set provided
- GUI available for modules and as an option for benchtops
- Web server, Telnet, SSH protocols

Reliability

All our fiber lasers and fiber amplifiers are manufactured according to our ISO certified quality management system, which places the needs and values of customers and partners at the heart of our organization. Throughout the manufacturing process, our components and systems are subjected to rigorous tests and inspections, which guarantees their robustness and reliability in the most demanding environments. Countless units operate continuously without maintenance around the world. The ISO 9001 certificates can be downloaded from our website.



LASER RADIATION
AVOID EYE OR SKIN EXPOSURE TO
DIRECT OR SCATTERED RADIATION
CLASS 4 LASER PRODUCT

www.keopsys.com

Many options and configurations are available. Please contact Lumibird to find the best match for your needs and compatibility between options.



Lumibird has locations across the globe that are available to provide support for any product, service or inquiry. Visit www.lumibird.com to connect with any of our global sites.

