

EVERGREEN²

Double-pulse Nd:YAG lasers for PIV



MAIN FEATURES

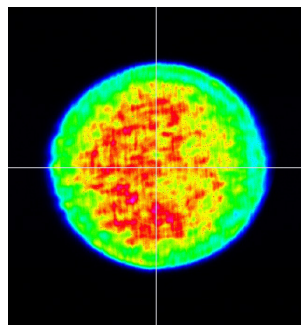
- Built to withstand harsh environments
- IP 66 sealed
- MIL-STD-810 compliant for vibrations and shocks
- Temperature cycled
- Easily portable for real world applications with grab and go handles
- From shipping box to lasing in less than 10 min
- Beam overlap warranted for 2 years
- Manual energy attenuator included **NEW**
- 266 nm option available upon request

MAIN APPLICATIONS

- **PARTICLE IMAGE VELOCIMETRY**
- **LASER INDUCED FLUORESCENCE**
- **COMBUSTION**

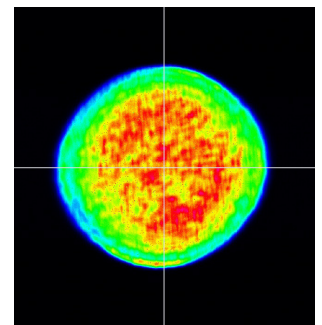
Typical beam profiles

Pulse 1



Near Field 200 mJ @ 532 nm, 15 Hz

Pulse 2



Near Field 200 mJ @ 532 nm, 15 Hz

06/21-REV B - Lumibird reserves the right to modify the specifications without prior notice.

www.quantel-laser.com

Many options and configurations are available. Please contact Lumibird to find the best match for your needs and compatibility between options.



Lumibird has locations across the globe that are available to provide support for any product, service or inquiry. Visit www.lumibird.com to connect with any of our global sites.



EVERGREEN²

Double-pulse Nd:YAG lasers for PIV



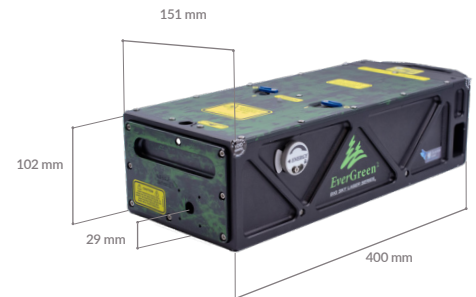
SPECIFICATIONS

	EVG00070	EVG00145	EVG00200	EVG25100	EVG00030-266
Wavelength (nm)	532				266
Pulse repetition rate (Hz)	15		25		15
Energy (mJ) ⁽¹⁾	70	145	200	100	30
Pulse-to-pulse energy stability (%RMS)	< 2.5		< 2		< 3
Energy drift over 8 hours (%)	10				
Pulse width (ns) ⁽²⁾	≤ 12			≤ 10	
Near field nominal beam diameter (mm)	5	6.35	6.35	5	6.35
Beam divergence (mrad) ⁽³⁾	< 4				
Shot to shot pointing stability (μrad)	< 100				
Far field beam overlap (μrad)	± 100				
Near field beam overlap (μm)	± 100				
Polarization	linearly polarized, vertical				
Spectral purity (%)	> 98				N/A, 266 nm collinear with residual 532 nm
Near field beam profile	flat-top, uniform				
Manual variable energy attenuator included (15 dB attenuation)	Yes				No

- (1) Double pulse system: energy given for each pulse
- (2) FWHM at nominal energy
- (3) Full angle containing 86.5 % energy

Operational temperature range	18°C - 28°C
Storage temperature range	5°C - 50°C
Power requirements	100-240 VAC 50-60 Hz single phase
Flashlamps warranty	100 million shots
Cooling	Air to water
Triggers	5 V nominal into 50 Ω or high impedance loads, user selectable
Laser head operation	Laser head assembly can operate in any orientation
Laser head sealing	IP 66 sealed Do not submerge in water
Power supply sealing	IP 21 sealed
Laser vibration	Complies with MIL-STD-810
Cable length	3 meters Optional 10 meters

Laser head



Integrated cooling & electronics



Laser control panel

www.quantel-laser.com

Many options and configurations are available. Please contact Lumibird to find the best match for your needs and compatibility between options.



Lumibird has locations across the globe that are available to provide support for any product, service or inquiry. Visit www.lumibird.com to connect with any of our global sites.

